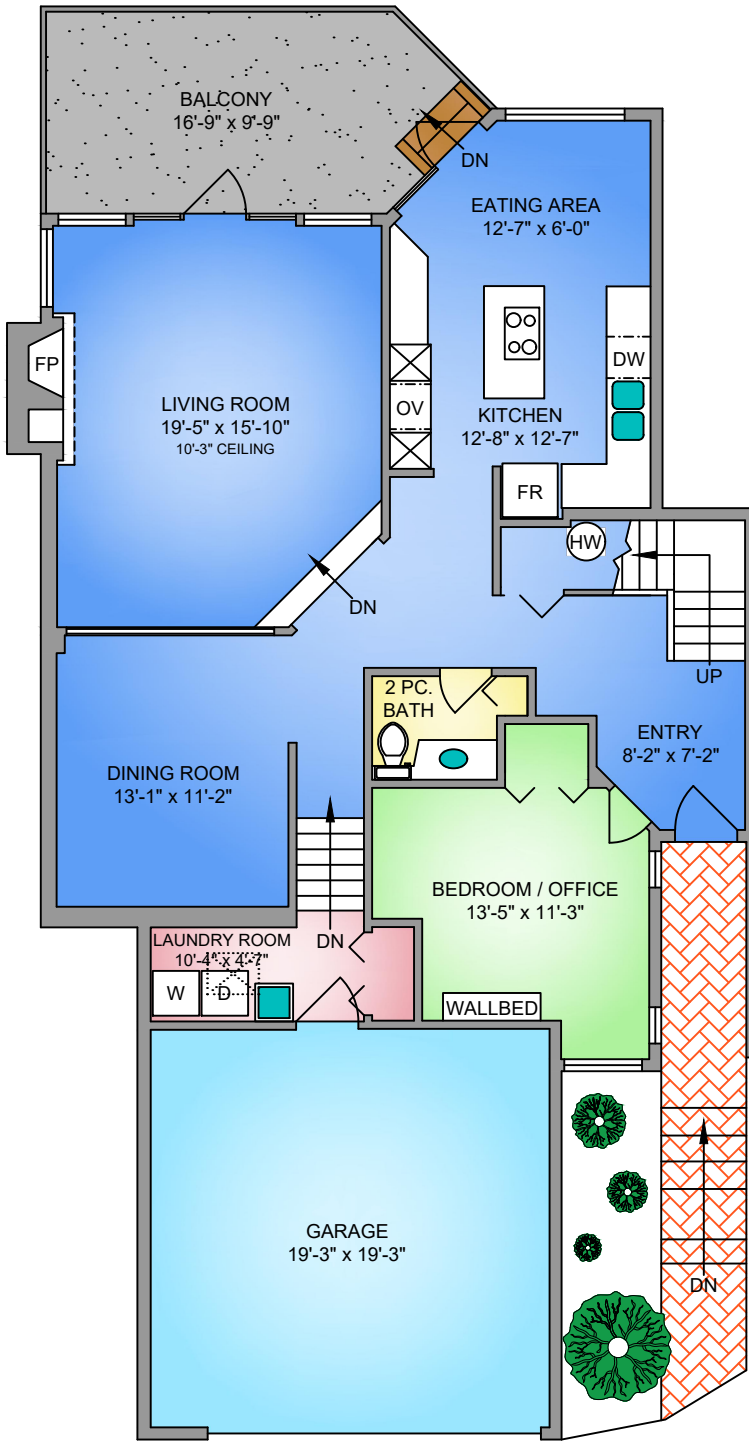
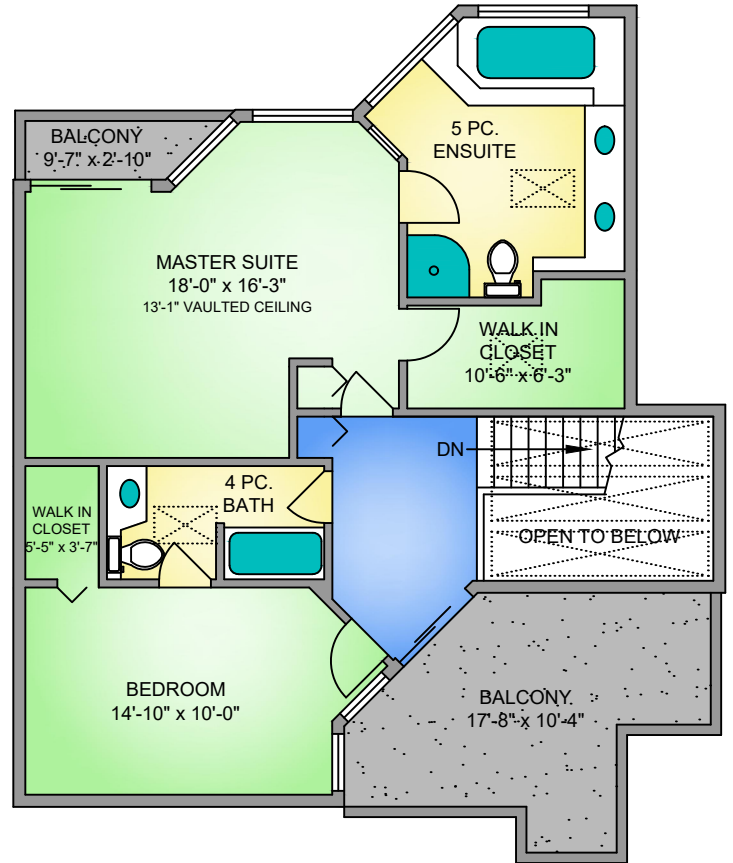


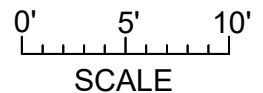
MAIN FLOOR
1272 SQ. FT.
 9'-0" CEILING HEIGHT



UPPER FLOOR
846 SQ. FT.
 9'-0" CEILING HEIGHT



NORTH



UNIT 12 - 4771 CORDOVA BAY ROAD
 JULY 30, 2018
 PREPARED FOR THE EXCLUSIVE USE OF GLYNIS MACLEOD
 PLANS MAY NOT BE 100% ACCURATE, IF CRITICAL BUYER TO VERIFY.

FLOOR	AREA (SQ. FT.)		
	FINISHED	GARAGE	BALCONY
MAIN	1272	391	186
UPPER	846	-	177
TOTAL	2118	391	363